

SOLENOID VALVE TIMER TU

MAIN CHARACTERISTICS

The solenoid valve timer TU is intended to pilot solenoid valve. (For example solenoid valve of drain sequential of the tanks and networks of compressed air). The frequency and the duration of opening are adjustable. The timer adapts itself directly on any solenoid valve equipped with reel with brooches with standardized connecting ISO. It takes place between the reel and the connector of supply.

AVAILABLE MODELS

Timer TU for :
ESM - EST - ESV all DN - VSO until 1".
Do not use with ESM85 and NAMUR pilot.
Use of the connector T30. (only)
Opening time range : 0,5 - 10 seconds
Frequency range : 0,5 - 45 minutes

LIMITS OF USE

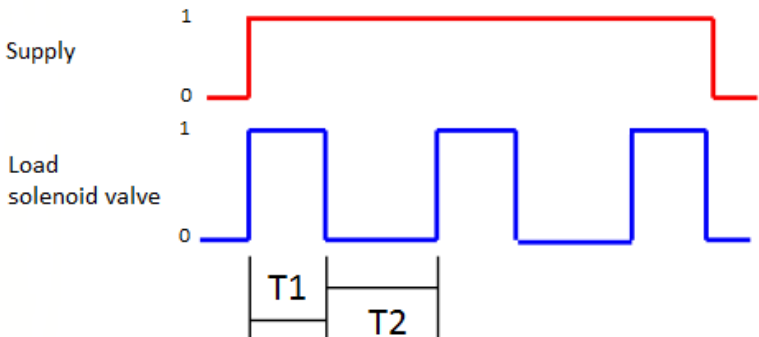
Electric protection	IP 65
opening temperature	-10 °C / +60 °C

REGULATIONS AND STANDARDS CONSTRUCTION

Item	Standard
Connector	DIN 43650 / ISO4400

PRINCIPLE OF FUNCTIONING

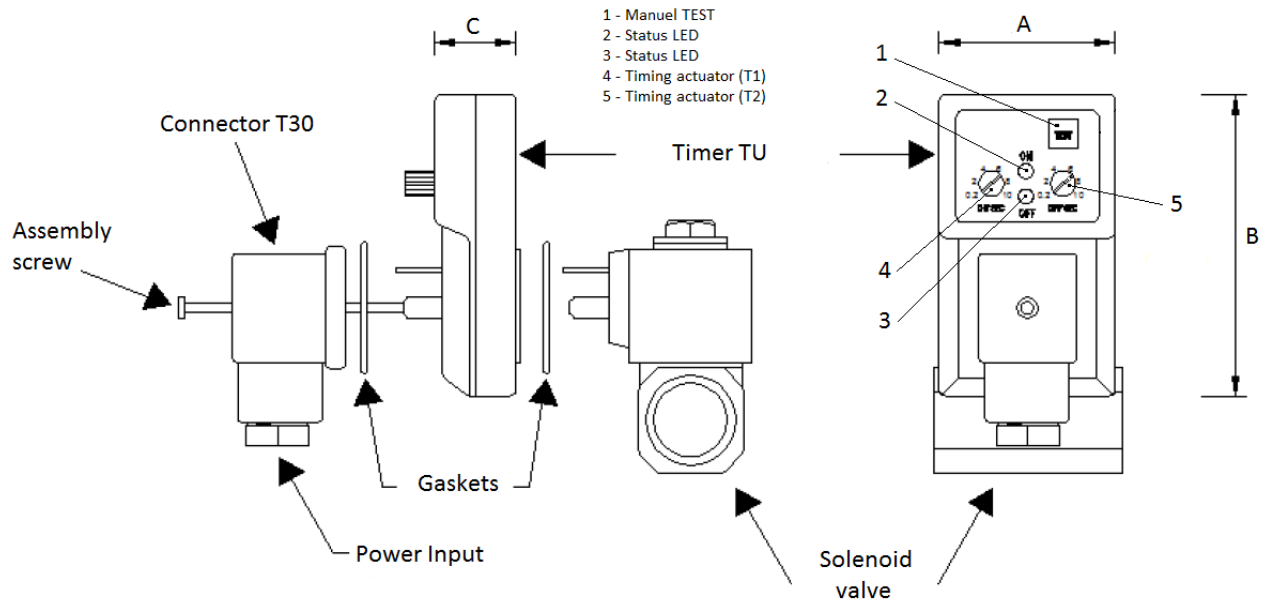
Transform a linear supply voltage into succession of impulses.
Opening time range "ON" : period T1 -> 0,5 to 10 seconds
Frequency range "OFF" : period T2 -> 0,5 to 45 minutes



SOLENOID VALVE TIMER TU

DIMENSIONS (mm) AND WEIGHT (Kg)

Timer	A	B	C	Weight (kg)
TU	43	74	20	0.080



ELECTRIC CHARACTERISTICS

Timer	Current	Available voltages (V)		Frequency		Intensity (A)	
						Max	Rush current
TU	AC	24	240	50 Hz	60 Hz	1	10
	DC	12	240			1	10

MOUNTING AND SETTING

The solenoid valve timer TU adapts itself on the solenoid valve between the reel and the connector and maybe directed in 180 ° with compared with the axis of connection, If the body of the solenoid valve allows it.

- 1 - Respect the assembly of the seal between the reel and the timer and the joint of the connector.
- 2 - The TU is delivered with 3 screws of different lengths, to assure the preservation of the connector and the timer on the solenoid valve.
- 3 - Regulation of time T1 and T2 on buttons locates (4 and 5).
- 4 - A TEST impulse locates (1) allows to switch on solenoid valve, when the power supply voltage is present.